

**Hermetically Sealed BNC Female to BNC Female Adapter, Bulkhead**

**Applications**

- Vacuum
- High pressure
- Airtight seal



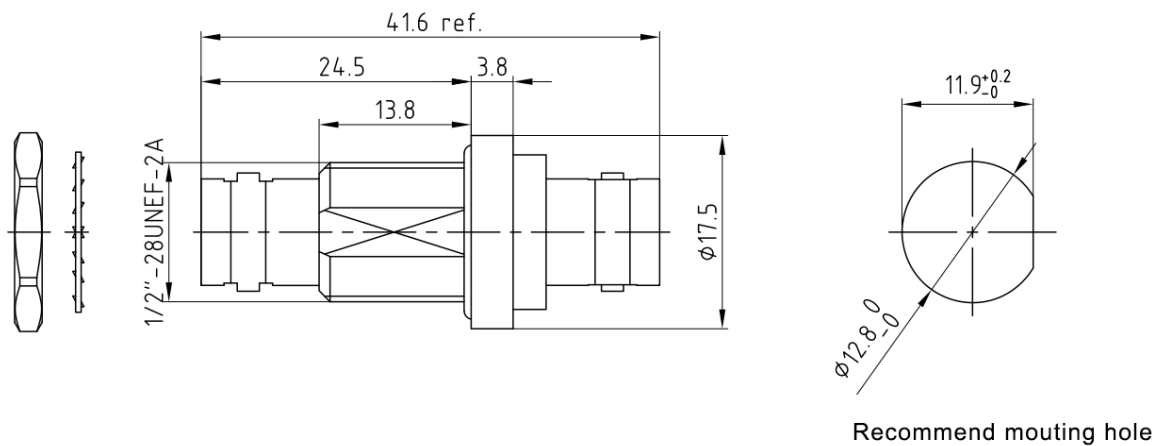
**Electrical**

Impedance	50 ohm
Frequency Range	DC-4 GHz
VSWR	≤1.40
Operating Voltage (AC)	≤500 Vrms
Dielectric Withstanding Voltage (AC)	≤1500 Vrms
Insulation Resistance	≥5000 MOhms
Hermetically (Leak Rate)	<1 x 10 <sup>-7</sup> cc/sec of helium at 1 atm
Operating Temperature	-25°C to +125°C

**Mechanical**

Connector Body	Brass, Ternary Alloy Plated
Outer Conductor	Brass, Ternary Alloy Plated
Center Contact	Bronze, Gold Plated
Insulator	PTFE
Inner Seal Insulator	Glass

**Drawing (Dimensions are in mm)**



Hermetically Sealed BNC Female to BNC Female Adapter, Bulkhead

Typical Test Data

