

# Waveguide to Coaxial Adapter    AWR112SMAEL

WR112 to SMA Female, Square Cover Flange, End Launch



Rev 3

## Electrical

Frequency Range	6.57-9.9 GHz
VSWR	1.2 max

## Configuration

Waveguide Size	IEC	84
	EIA	WR112
Flange Type	IEC	UBR84
	North America	Al alloy: M3922/53-004(UG138/U) Cu alloy: M3922/53-002(UG51/U)
Coax Connector	SMA Female	
Body Geometry	End Launch	

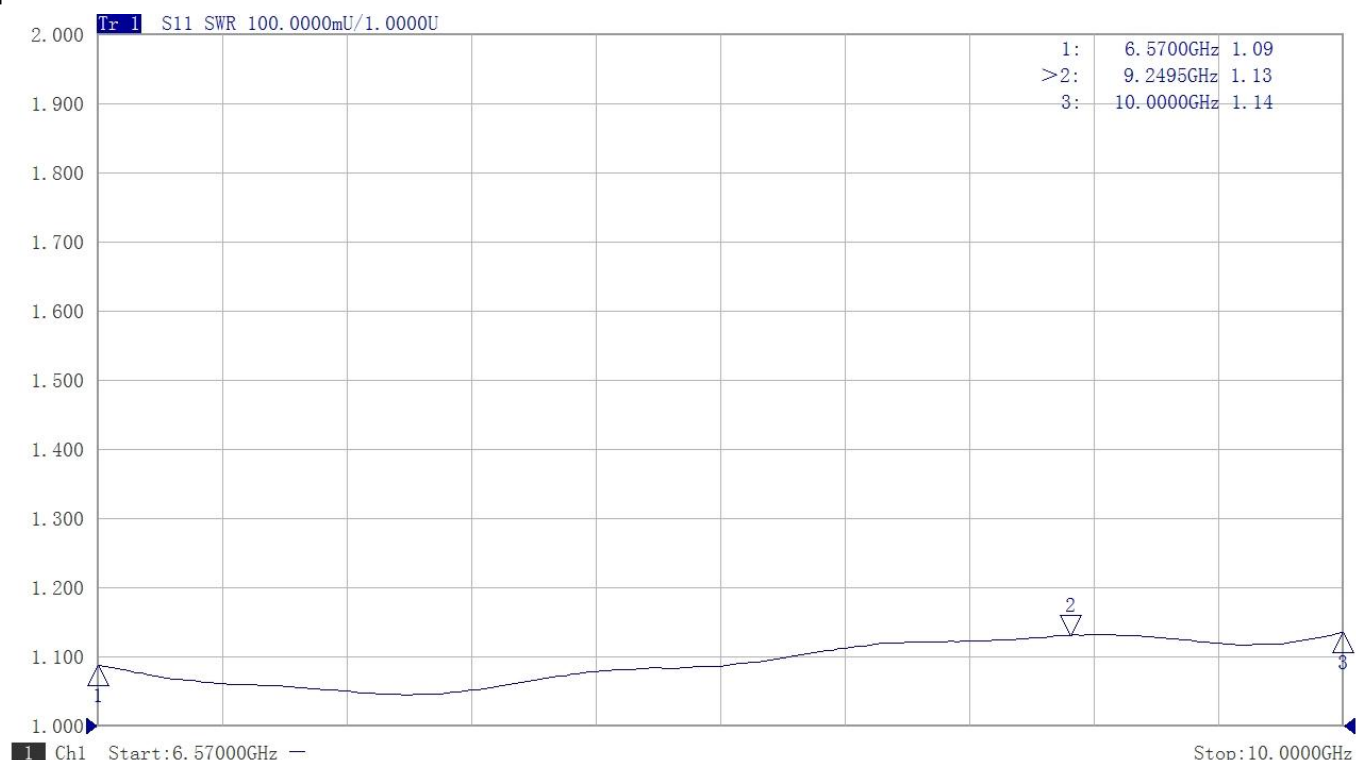
## Materials

Waveguide Body	Aluminum, black or grey painted
Connector Body	Passivated stainless steel
Center Contact	Gold plated beryllium copper

## Mechanical & Environmental

Operating Temp	-40°C to 70°C
Connector Interface	MIL-STD-348
RoHS	Compliant

## Typical Test Data



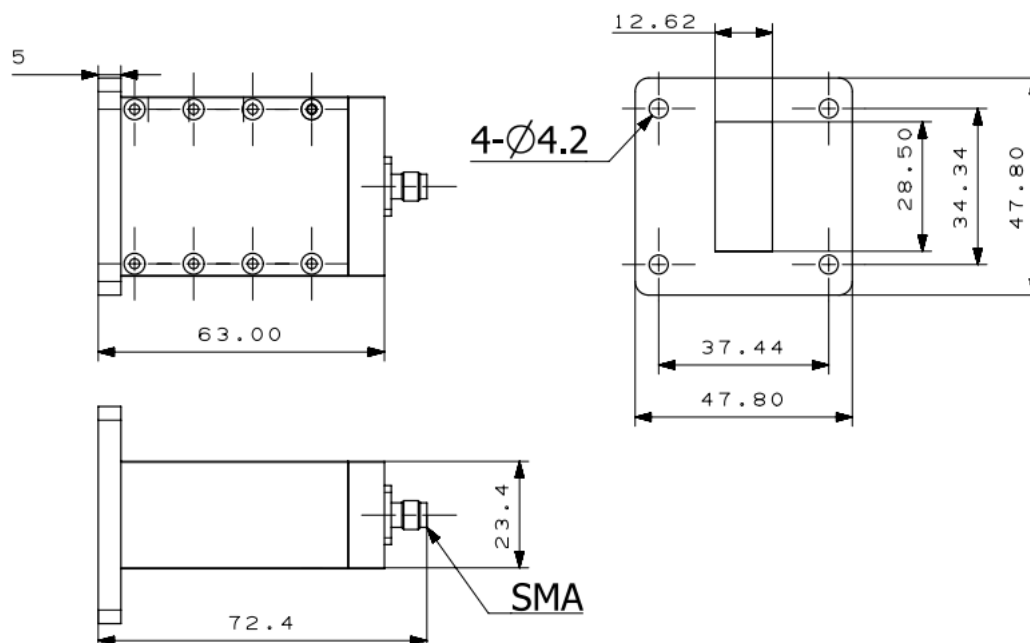
# Waveguide to Coaxial Adapter    AWR112SMAEL

WR112 to SMA Female, Square Cover Flange, End Launch

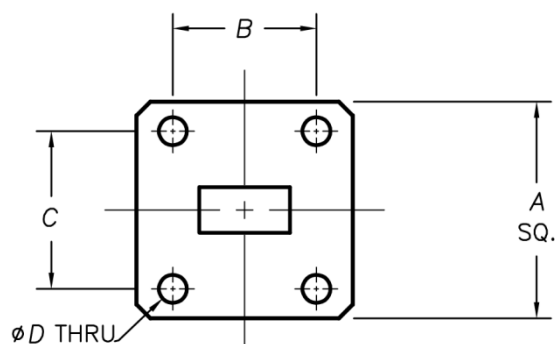


Rev 3

## Dimensions(mm)



## Flange Comparison (Unit mm)



WG SIZE	CONFORMING STANDARD	A	B	C	D
WR112	RF ONE:AWR112SMAEL	47.8	34.34	37.44	4.2
	IEC60154:UBR84	47.80	34.34	37.44	4.17
	USA:MIL3922/53-004(UG138/U)	47.63	34.34	37.44	4.29

\* The purpose of this size comparison is to provide a quick overview of different flange standards.

\* Great care has been given nevertheless there might be a few mistakes.

\* Please check the flange compatibility before ordering. Customized flanges are available.