


**WR284 to DIN 7/16 Female Waveguide to Coaxial Adapter
UDR32 Flange, Right Angle**

Rev 5

Electrical

| | |
|-----------------|--------------|
| Frequency Range | 2.6-3.95 GHz |
| VSWR | 1.2 max |
| Average Power | 1000 Watts |

Configuration

| | | |
|----------------|-----------------|---|
| Waveguide Size | IEC | R32 |
| | EIA | WR284 |
| Flange | IEC | UDR32 |
| | North America | Al alloy: M3922/52-010(UG1725/U) Cu alloy: M3922/52-009(UG1724/U) CPR284F |
| Coax Connector | DIN 7/16 Female | |
| Body Geometry | Right Angle | |

Mechanical & Environmental

| | |
|-----------------------|--|
| Waveguide Body | Aluminum, conductive oxidation, anti-corrosive paint |
| Connector Body | Ternary alloy plated brass |
| Center Contact | Silver plated beryllium copper |
| Operating Temperature | -40°C to +85°C |
| Connector Interface | IEC 61169-4 |
| RoHS | Compliant under exemptions 6 (b) or 6 (c) |
| Net Weight | Approx 680g |

Note

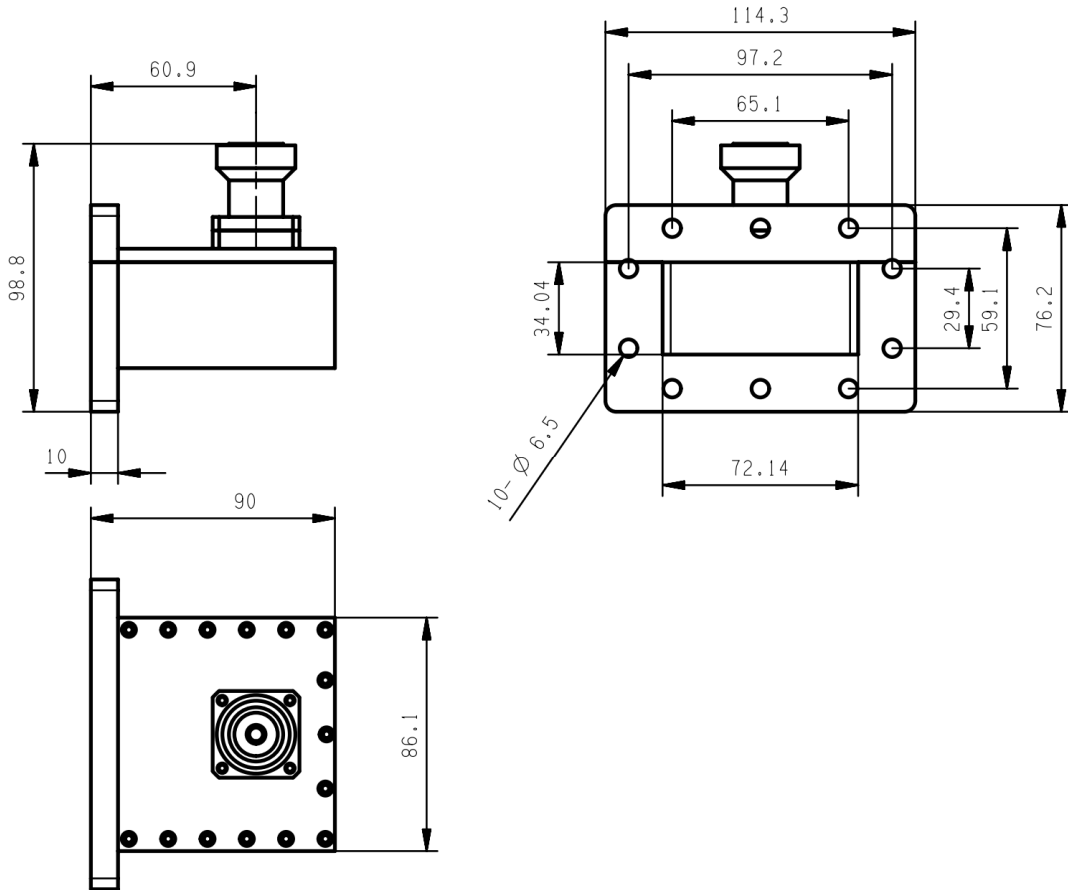
* Flange size may not be 100% identical with the above listed standards, but are compatible. Refer to the next page for comparison table.

* Paint in grey or black by default, other colors available.

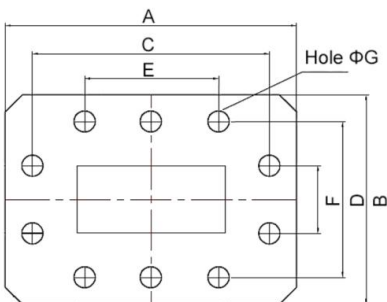
**WR284 to DIN 7/16 Female Waveguide to Coaxial Adapter
UDR32 Flange, Right Angle**



Dimensions(mm)



Flange Comparison (mm)



* The purpose of this comparison is to provide a quick reference of different flange standards. Great care has been given, nevertheless there might be a few mistakes.

* Please check the flange compatibility before ordering. Customized flanges are available.

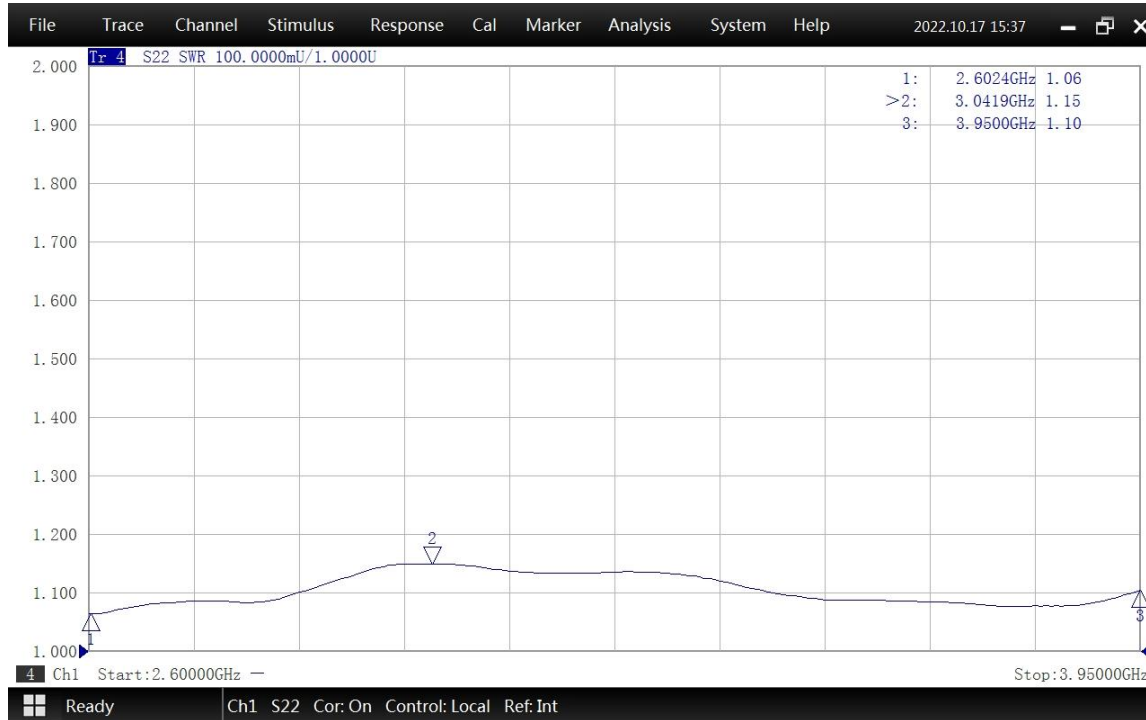
| WG SIZE | CONFORMING STANDARD | A | B | C | D | E | F | G |
|---------|----------------------------|--------|-------|-------|-------|-------|-------|------|
| WR284 | RF ONE:AWR284D | 114.3 | 76.2 | 97.2 | 59.1 | 65.1 | 29.4 | 6.5 |
| | IEC60154:UDR32 | 114.30 | 76.20 | 97.22 | 59.14 | 65.08 | 29.36 | 6.35 |
| | USA:M3922/52-010(UG1725/U) | 114.30 | 76.20 | 97.24 | 59.14 | 65.08 | 29.36 | 6.53 |
| | USA:CPR 284F | 114.30 | 76.20 | 97.24 | 59.14 | 65.06 | 29.36 | 6.55 |

WR284 to DIN 7/16 Female Waveguide to Coaxial Adapter UDR32 Flange, Right Angle

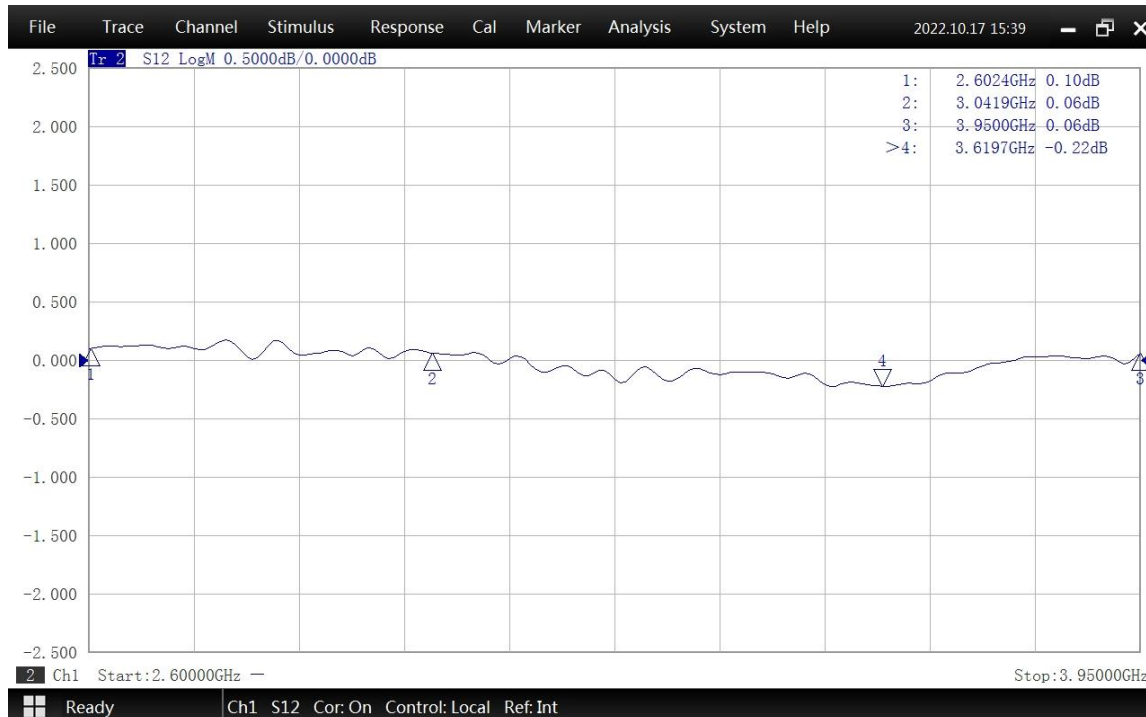


Rev 5

Typical Test Data at 25°C



VSWR



Insertion Loss*

* In Insertion Loss (IL) testing, adapters are measured back-to-back. To obtain the loss of a single adapter, divide the measured value by two.