

Waveguide to Coaxial Adapter AWR51SMA

WR51 to SMA Female, Square Cover Flange, Right Angle



Rev 3

Electrical

Frequency Range	14.5-22 GHz
VSWR	1.2 max

Configuration

Waveguide Size	IEC	180
	EIA	WR51
Flange Type	IEC	UBR180
	North America	/
Coax Connector	SMA Female	
Body Geometry	Right Angle	

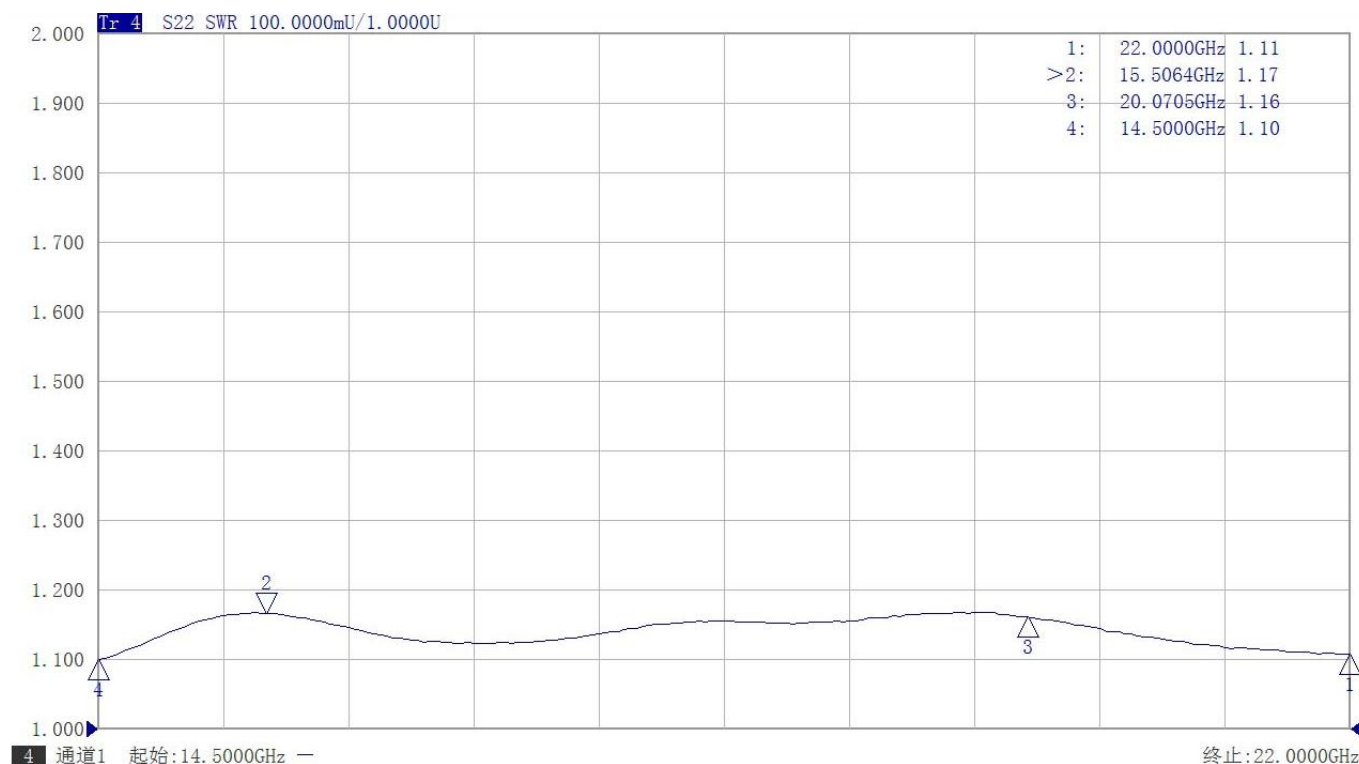
Materials

Waveguide Body	Aluminum, black or grey painted
Connector Body	Passivated stainless steel
Center Contact	Gold plated beryllium copper

Mechanical & Environmental

Operating Temp	-40℃ to 70℃
Connector Interface	MIL-STD-348
RoHS	Compliant

Dimensions(mm)



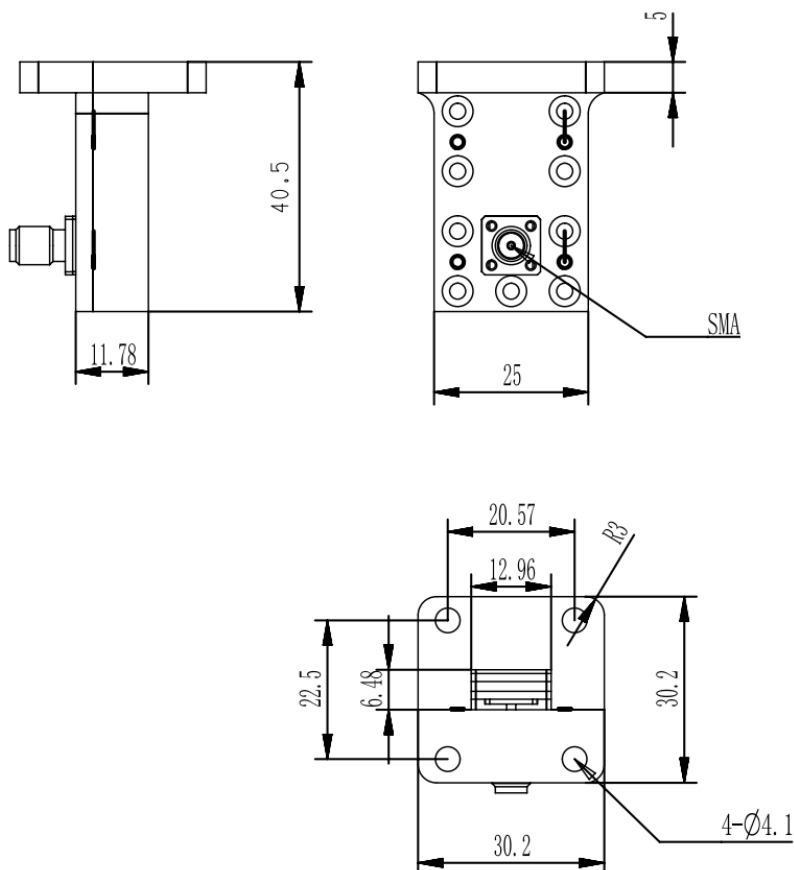
Waveguide to Coaxial Adapter **AWR51SMA**

WR51 to SMA Female, Square Cover Flange, Right Angle

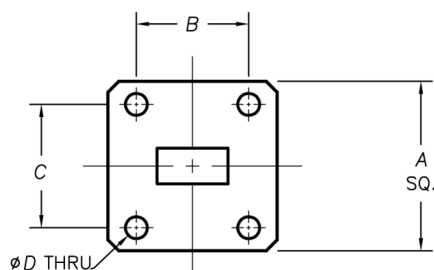


Rev 3

Dimensions(mm)



Flange Comparison (Unit mm)



WG SIZE	CONFORMING STANDARD	A	B	C	D
WR51	RF ONE:AWR51SMA	30.2	20.57	22.5	4.1
	IEC60154:UBR180	30.10	20.57	22.5	4.00

* The purpose of this size comparison is to provide a quick overview of different flange standards.

* Great care has been given nevertheless there might be a few mistakes.

* Please check the flange compatibility before ordering. Customized flanges are available.