



## Waveguide to Coaxial Adapter **AWR75SMA**

### WR75 to SMA Female, Square Cover Flange, Right Angle

Rev 4

#### Electrical

<b>Impedance</b>	50 ohm
<b>Frequency Range</b>	9.84-15 GHz
<b>VSWR</b>	1.2 max
<b>Insertion Loss</b>	0.25dB max

#### Configuration

<b>Waveguide Size</b>	IEC	R120
	EIA	WR75
<b>Flange Type</b>	IEC	UBR120
	North America	Al alloy: MIL3922/70-025 Cu alloy: MIL3922/70-026
<b>Coax Connector</b>	SMA Female	
<b>Body Geometry</b>	Right Angle	

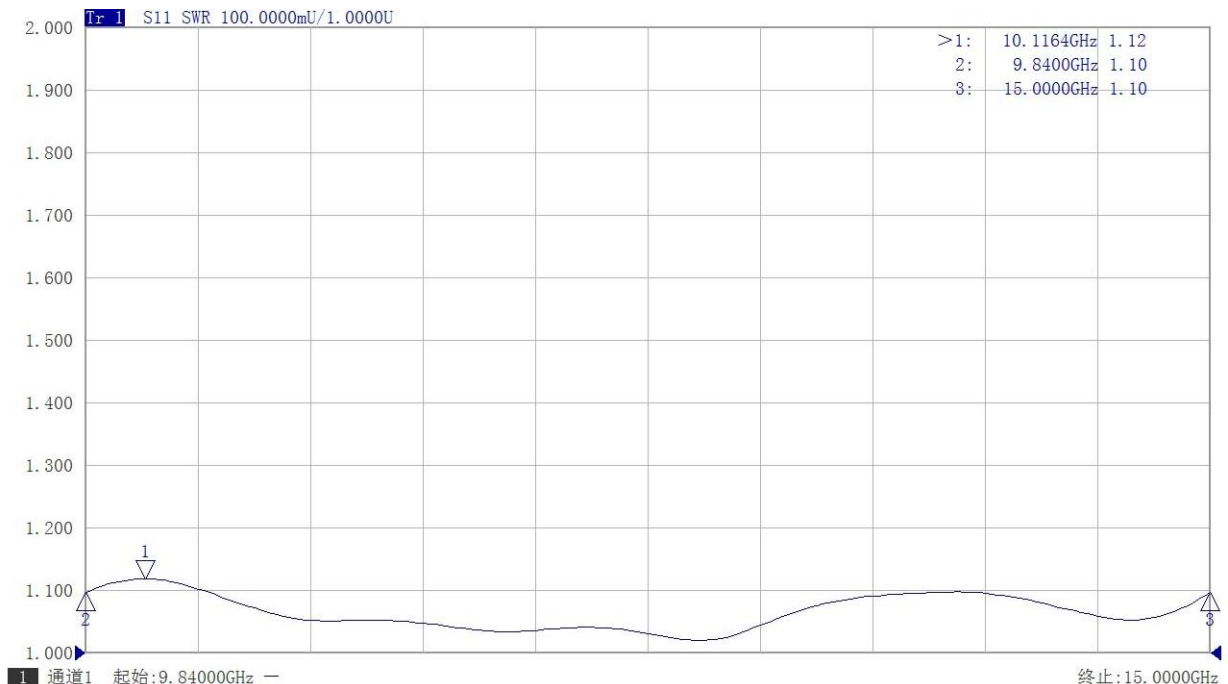
#### Materials

<b>Waveguide Body</b>	Aluminum, black or grey painted
<b>Connector Body</b>	Passivated stainless steel
<b>Center Contact</b>	Gold plated beryllium copper

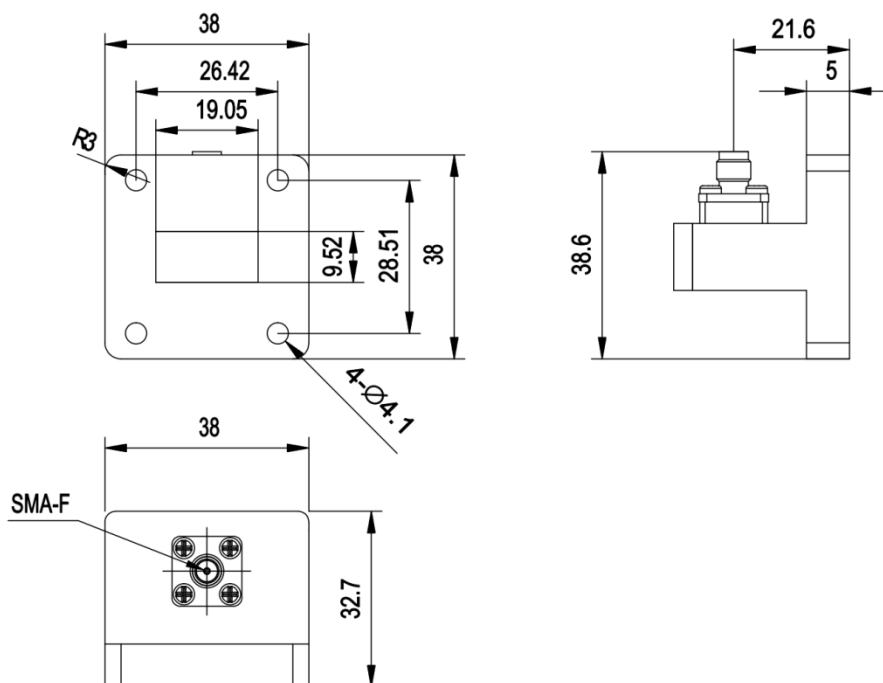
#### Mechanical & Environmental

<b>Operating Temp</b>	-40°C to 70°C
<b>Connector Interface</b>	MIL-STD-348
<b>RoHS</b>	Compliant

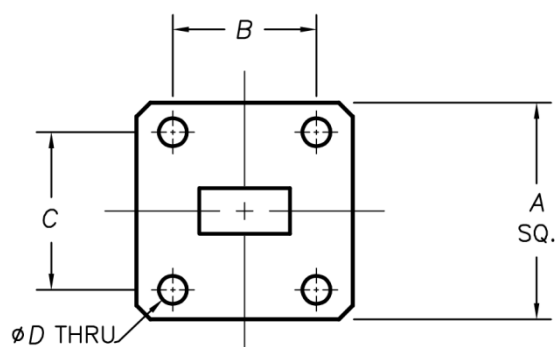
#### Typical Test Data



## Dimensions(mm)



## Flange Comparison (Unit mm)



WG SIZE	CONFORMING STANDARD	A	B	C	D
WR75	RF ONE:AWR75SMA	38	26.42	28.51	4.1
	IEC60154:UBR120	38.10	26.42	28.5	4.00
	USA:MIL3922/70-025	38.10	26.42	28.5	3.70

\* The purpose of this size comparison is to provide a quick overview of different flange standards.

\* Great care has been given nevertheless there might be a few mistakes.

\* Please check the flange compatibility before ordering. Customized flanges are available.