

# Waveguide to Coaxial Adapter    AWR75SMAEL

WR75 to SMA Female, Square Cover Flange, End Launch



Rev 4

## Electrical

Frequency Range	9.84-15 GHz
VSWR	1.2 max

## Configuration

Waveguide Size	IEC	R120
	EIA	WR75
Flange Type	IEC	UBR120
	North America	Al alloy: MIL3922/70-025 Cu alloy: MIL3922/70-026
Coax Connector	SMA Female	
Body Geometry	End Launch	

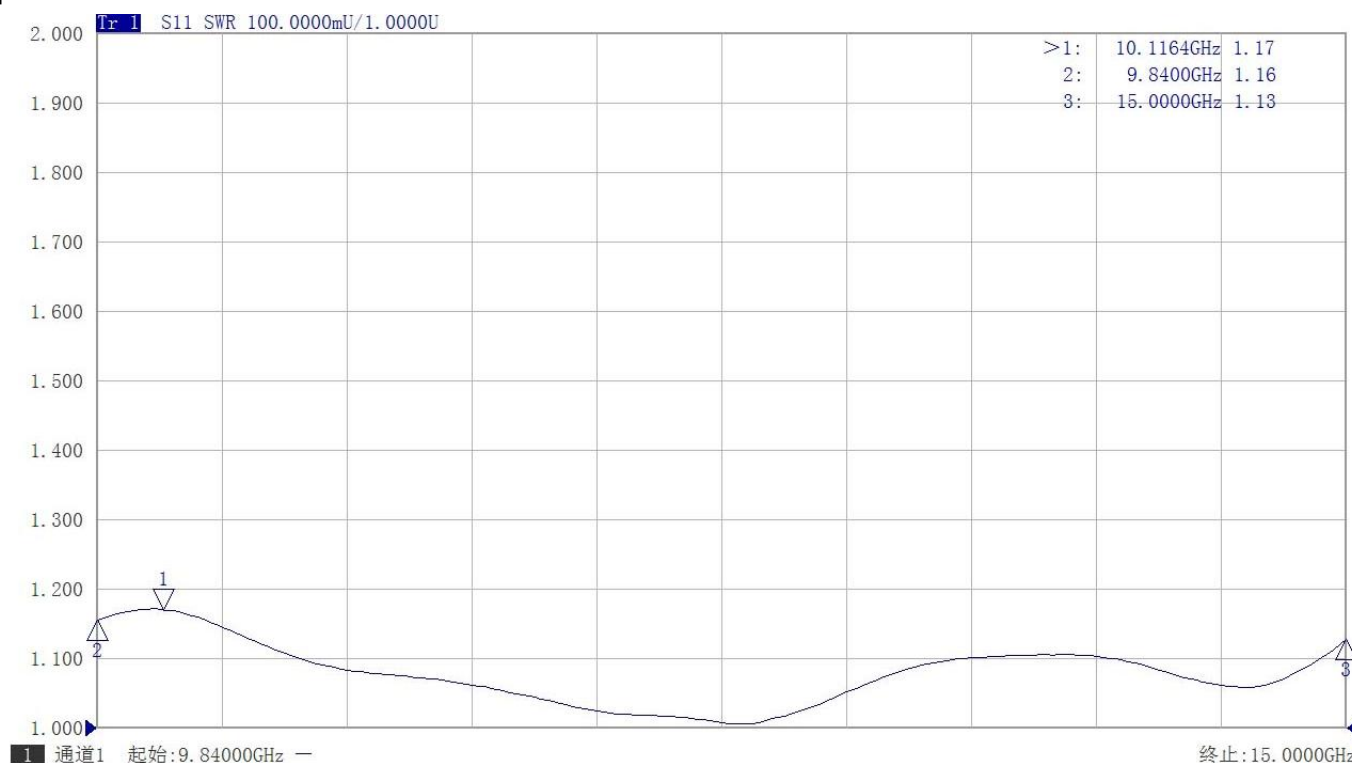
## Materials

Waveguide Body	Aluminum, black or grey painted
Connector Body	Passivated stainless steel
Center Contact	Gold plated beryllium copper

## Mechanical & Environmental

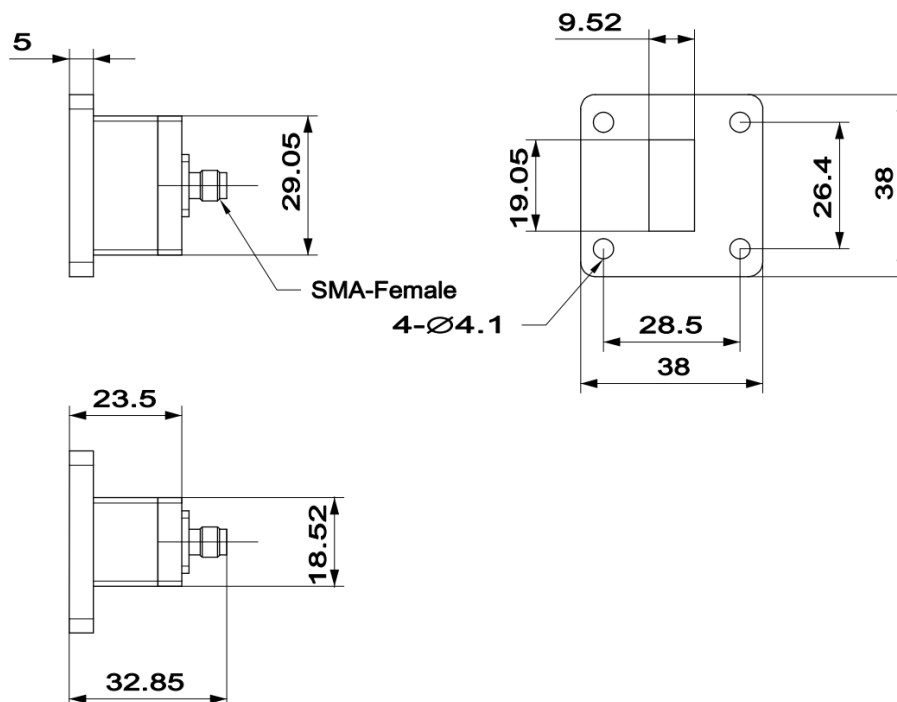
Operating Temp	-40℃ to 70℃
Connector Interface	MIL-STD-348
RoHS	Compliant

## Typical Test Data

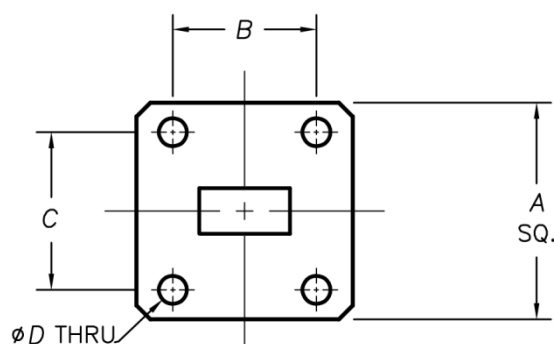




### Dimensions(mm)



### Flange Comparison (Unit mm)



WG SIZE	CONFORMING STANDARD	A	B	C	D
WR75	RF ONE:AWR75SMAEL	38	26.4	28.5	4.1
	IEC60154:UBR120	38.10	26.42	28.5	4.00
	USA:MIL3922/70-026	38.10	26.42	28.5	3.70

\* The purpose of this size comparison is to provide a quick overview of different flange standards.

\* Great care has been given nevertheless there might be a few mistakes.

\* Please check the flange compatibility before ordering. Customized flanges are available.