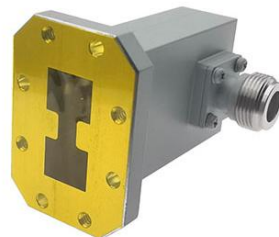


Double Ridge Waveguide to Coax Adapter

AWRD475N

WRD475 to N Female, Cover Flange, Right Angle



Rev 2

Electrical

Frequency Range	4.75-11 GHz
VSWR	1.2 max
Average Power	200 Watts

Configuration

Waveguide Size	WRD475
Flange Type	Cover Flange, FPWRD475
Coax Connector	N Female
Body Geometry	Right Angle

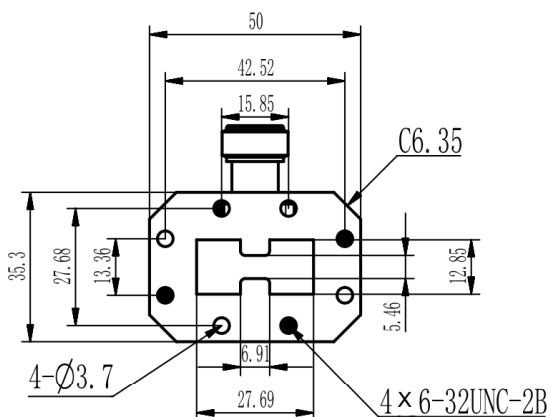
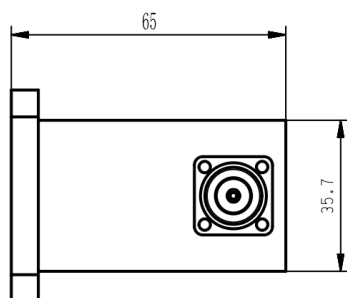
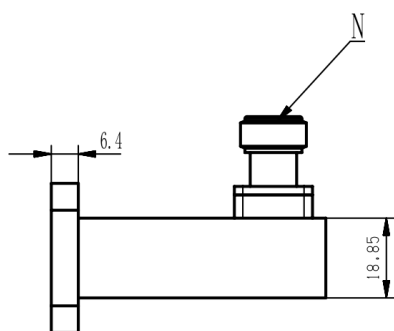
Materials

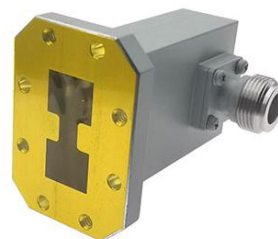
Waveguide Body	Aluminum, grey or black painted
Connector Body	Passivated stainless steel
Center Contact	Gold plated beryllium copper

Mechanical & Environmental

Operating Temp	-40°C to 70°C
Connector Interface	MIL-STD-348
RoHS	Compliant

Dimensions(mm)





Typical Test Data

