

Electrical

Frequency Range	5-18 GHz
VSWR	1.3 max
Average Power	50 Watts

Configuration

Waveguide Size	WRD500
Flange Type	Cover, FPWRD500
Coax Connector	SMA Female
Body Geometry	Right Angle

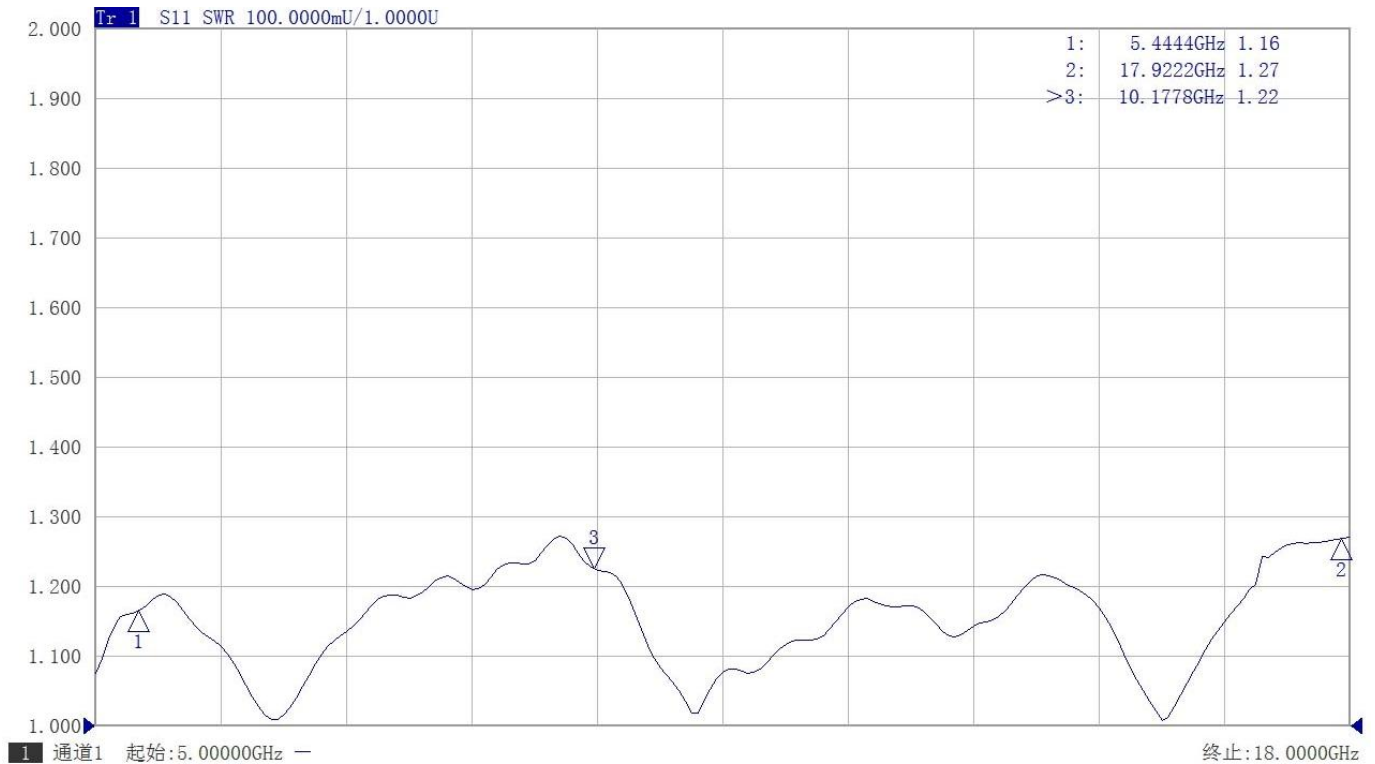
Materials

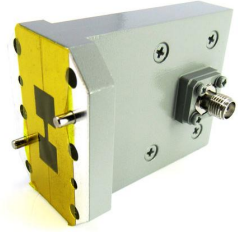
Waveguide Body	Aluminum, grey or black painted
Connector Body	Passivated stainless steel
Center Contact	Gold plated beryllium copper

Mechanical & Environmental

Operating Temp	-40°C to 70°C
Connector Interface	MIL-STD-348
RoHS	Compliant

Typical Test Data





Dimensions(mm)

