

Electrical

Frequency Range	5.8-16 GHz
VSWR	1.3 max
Average Power	200 Watts

Configuration

Waveguide Size	WRD580
Flange Type	Square Cover, FPWRD580
Coax Connector	N Female
Body Geometry	Right Angle

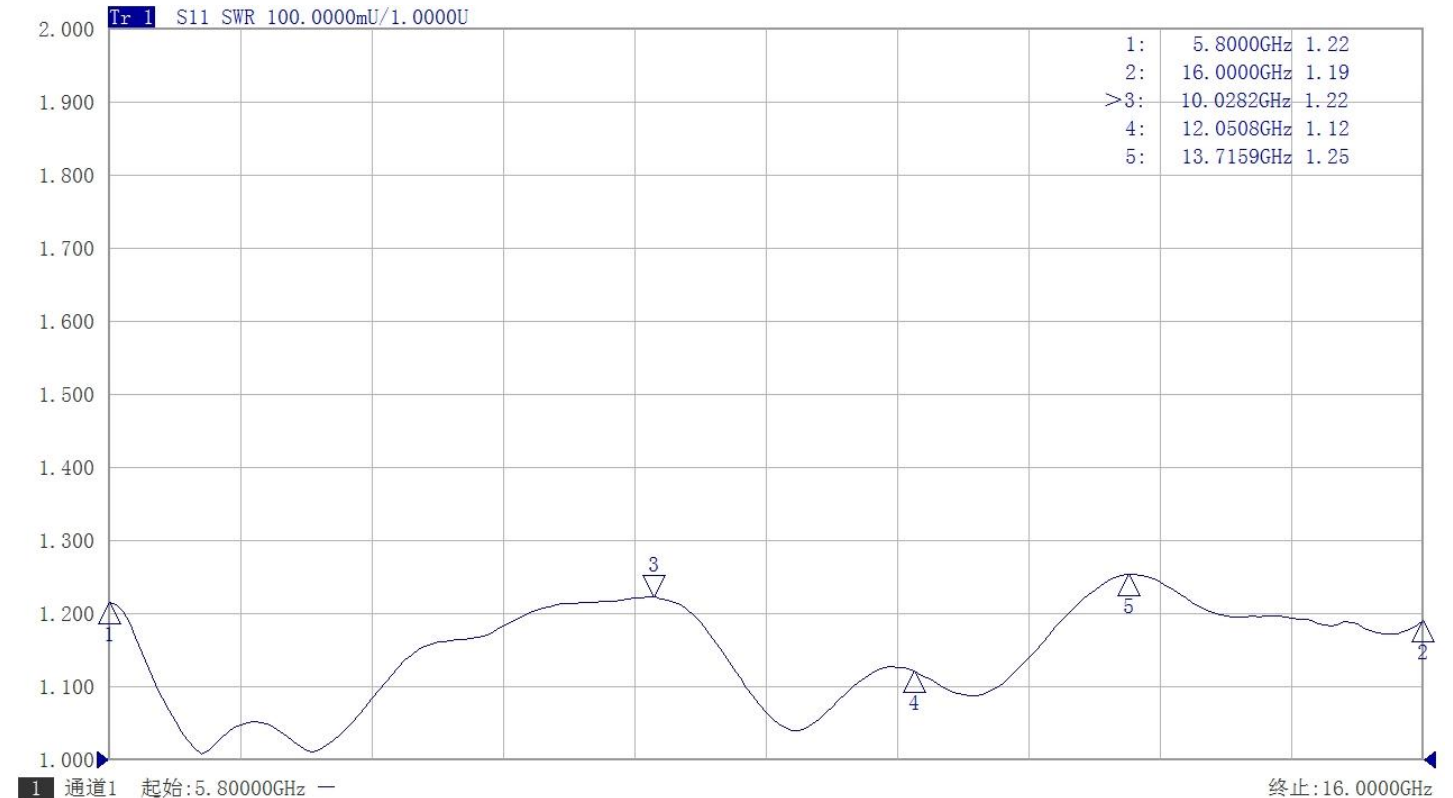
Materials

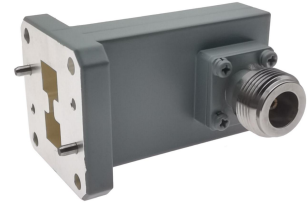
Waveguide Body	Aluminum, grey or black painted
Connector Body	Passivated stainless steel
Center Contact	Gold plated beryllium copper

Mechanical & Environmental

Operating Temp	-40°C to 70°C
Connector Interface	MIL-STD-348
RoHS	Compliant

Typical Test Data





Dimensions(mm)

