

# Inner DC Block

# DB06B2A

10MHz-6GHz, BNC, 100 Volts



Rev 1

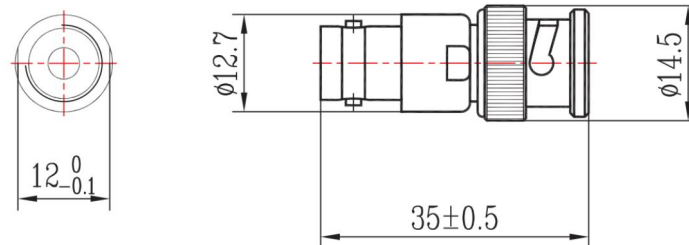
## Electrical & Environmental

Impedance	50 ohm
Frequency Range	10 MHz-6 GHz
VSWR	1.25 max
Insertion Loss	0.5dB max
Voltage Rating	100 Volts max
Operating Temp	-55°C to 100°C
RoHS	Compliant

## Mechanical

Connector	BNC female to BNC male (other configurations available)
Connector Body	Ternary alloy plated brass
Center Contact	Gold plated beryllium copper/brass
Net Weight	About 15g

## Dimensions(mm)



## Typical Test Data

