

Coaxial Fixed Attenuator

RFHB18XXSC2

DC-18 GHz, 0-60 dB, 2 Watts, SMA, Bidirectional



Rev 3

Electrical

Impedance	50 ohm							
Frequency Range	DC-18 GHz							
VSWR	1.3 max							
Input Avg Power	2W@ 25°C ambient, derating linearly to 0.2W at 100°C							
Peak Power	250W (5 micro-sec pulse width, 0.4% duty cycle)							
Direction	Bidirectional, SMA female to SMA male (other configurations available)							
Attenuation(dB)	0	1-6	7-12	13-20	21-30	40	50	60
Accuracy(dB)	0/+0.5	±0.4	±0.5	±0.8	±1.0	±1.2	±1.5	±1.5

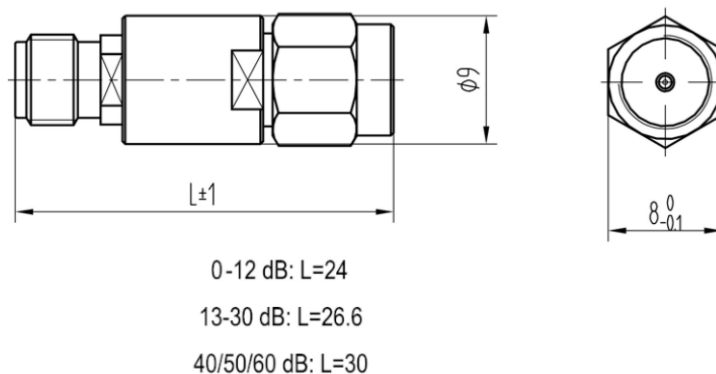
Mechanical

Connector Body	Passivated stainless steel
Heat Sink	N/A
Center Contact	Gold plated beryllium copper/brass
Net Weight	About 6 g

Environmental

Operating Temperature	-55°C to 100°C
Storage Temperature	-55°C to 125°C
RoHS	Compliant
Temperature Coefficient	<0.0004 dB/dB/°C

Dimensions(mm)



Notes

1.Customized dB values, outlines and optimal accuracy/VSWR available.

Model Description

RFHB18XXSC2

1.XX for dB value: 06=6dB,30=30dB

2.Code for connector configuration:

A=female for two ends; B=male for two ends

C=female for one end and male for the other.