

# Coaxial Fixed Attenuator

**RFHB50XX24C5**

**DC-50 GHz, 1-40 dB, 5 Watts, 2.4mm, Bidirectional**



Rev 3

## Electrical

Impedance	50 ohm			
Frequency Range	DC-50 GHz			
VSWR	1.34 max			
Input Avg Power	5W@ 25℃ ambient, derating linearly to 0.5W at 100℃			
Peak Power	100W (5 micro-sec pulse width, 2% duty cycle)			
Direction	Bidirectional, 2.4mm female to 2.4mm male (other configurations available)			
Attenuation(dB)	1-3	4-8	9-25	26-40
Accuracy(dB)	-0.7/+1.0	-0.8/+1.2	-0.8/+0.8	-0.9/+1.2

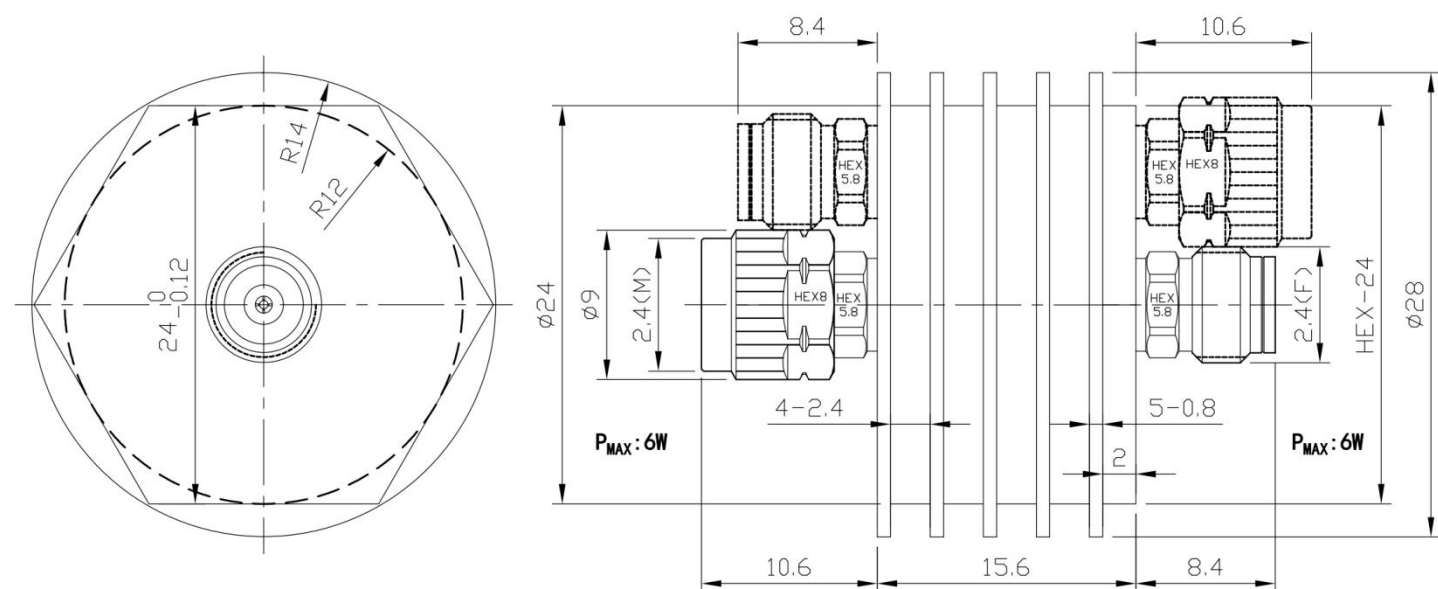
## Mechanical

Connector Body	Passivated stainless steel
Heat Sink	Black anodized aluminum
Center Contact	1.27um Gold plated BeCu
Net Weight	Approx 28 g

## Environmental

Operating Temperature	-55℃ to 100℃
Storage Temperature	-55℃ to 125℃
RoHS	Compliant
Temperature Coefficient	<0.0004 dB/dB/℃

## Dimensions(mm)



## Notes

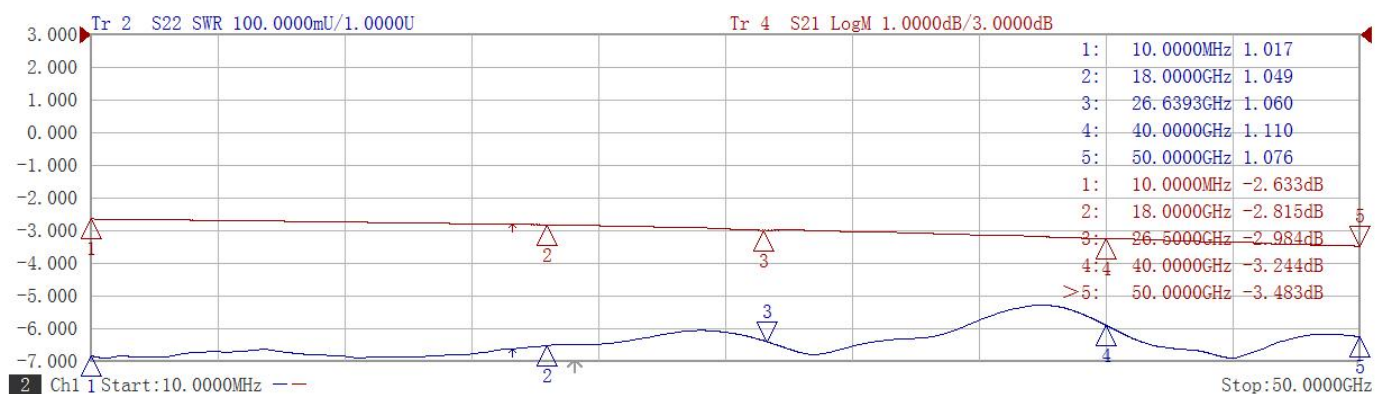
- 1.To maintain best performance, recommended to use fan to keep the case temperature under 85℃.
- 2.Customized dB values, outlines and optimal accuracy/VSWR available.

## Model Description

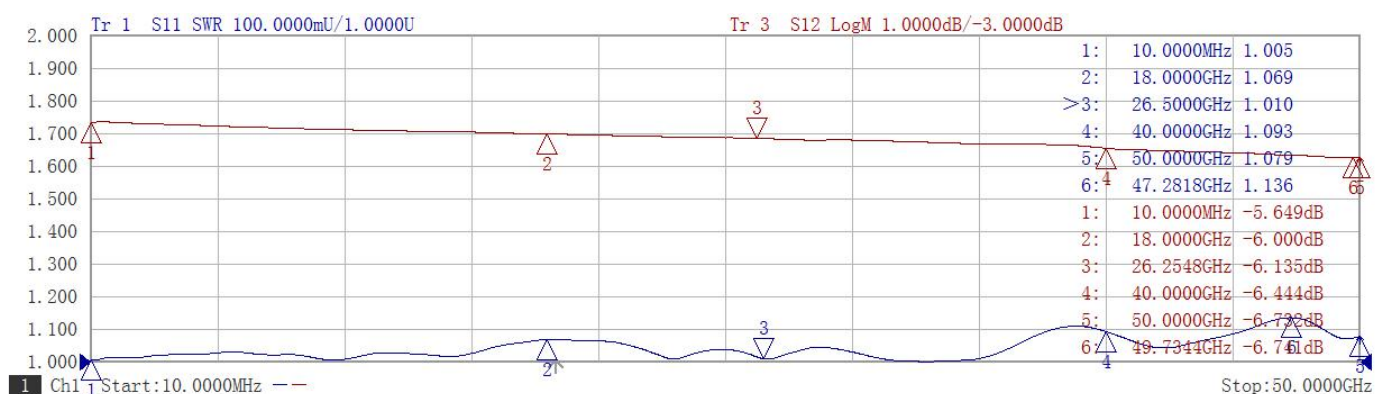
### RFHB50XX24C5

- 1.XX for dB value: 06=6dB,30=30dB
- 2.Code for connector configuration:  
A=female for two ends; B=male for two ends  
C=female for one end and male for the other.

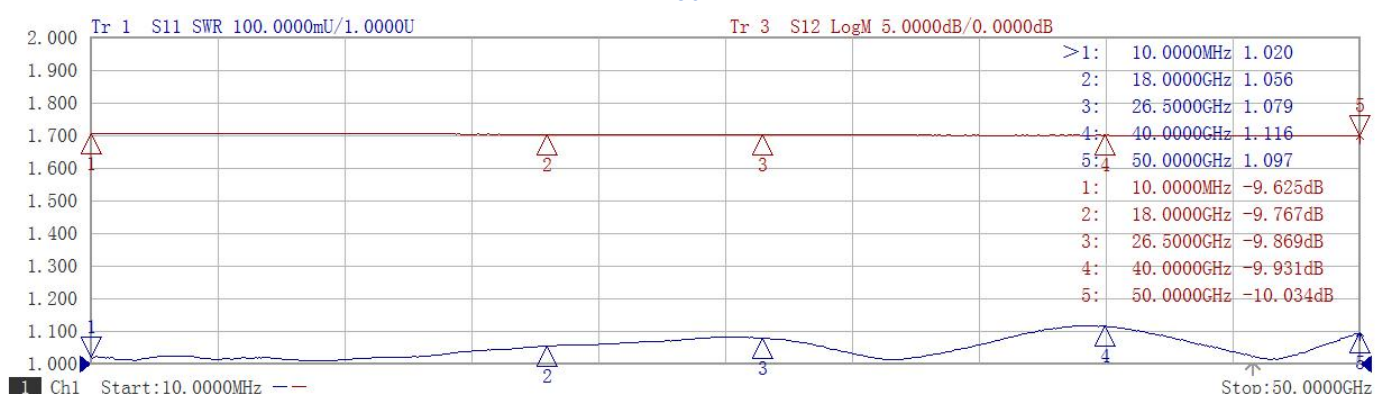
### 3dB



### 6dB



### 10dB



### 20dB

