

15 dBi Gain, 14.5-22 GHz, WR51 Standard Gain Horn with SMA Female Port

Rev 1

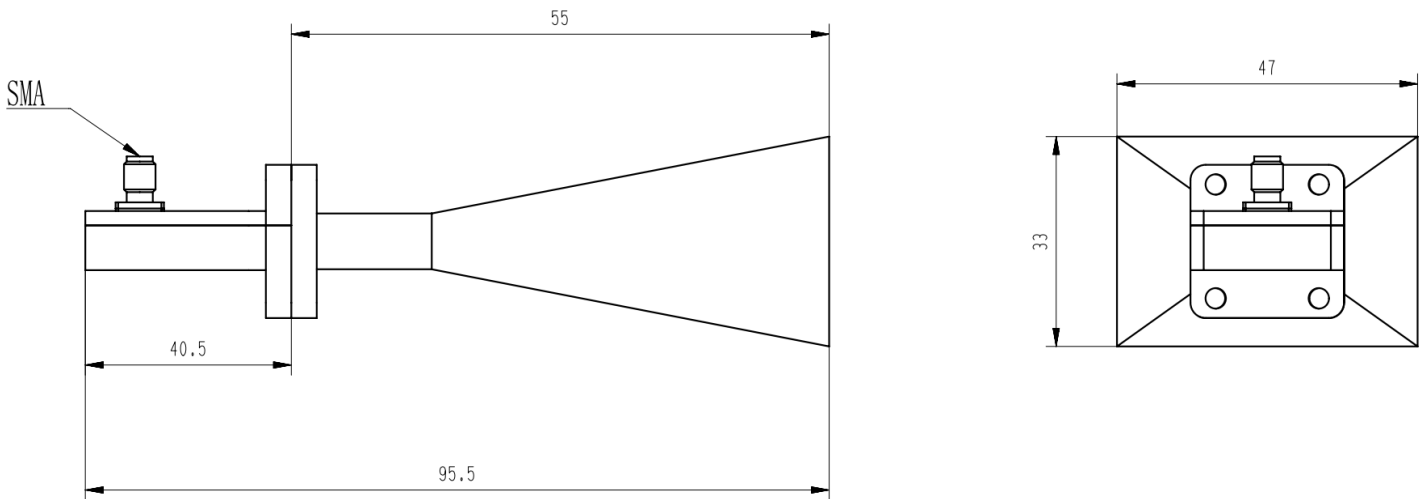
Electrical

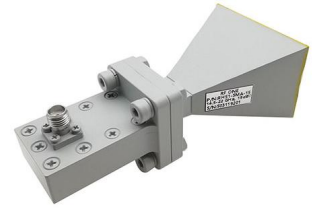
Frequency Range	14.5-22 GHz
Norminal Gain	15 dBi
Polarization	Linear
VSWR	1.3 max
Operating Temperature	-40°C~+70°C

Mechanical

Waveguide Size	WR51
Flange Type	UBR180 Square Cover Flange
Body Material and Finish	Copper, Painted
RF Connector	SMA Female

Dimensions(mm)





15 dBi Gain, 14.5-22 GHz, WR51 Standard Gain Horn with SMA Female Port

Rev 1

Typical VSWR

