



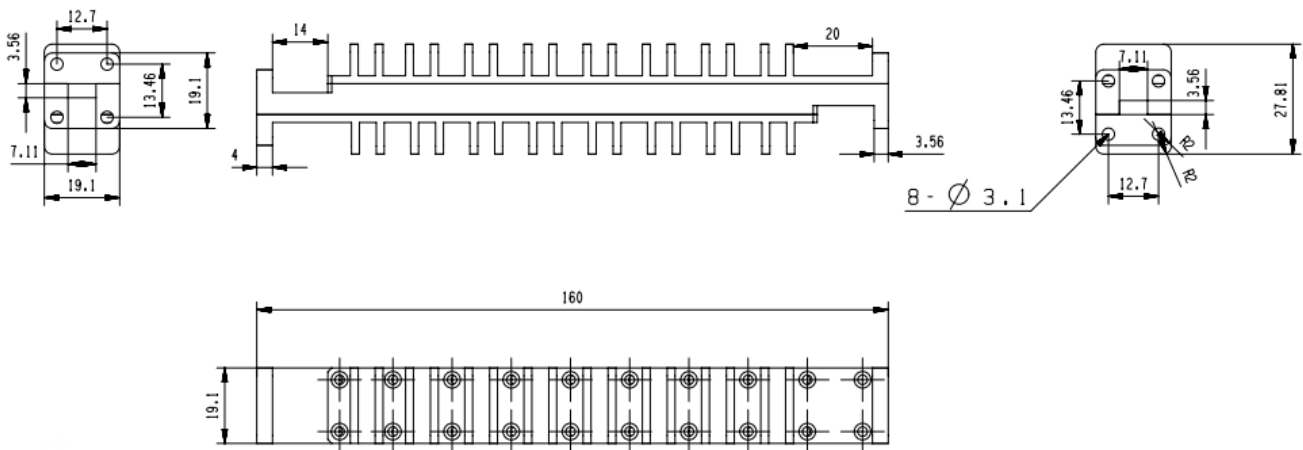
**Electrical**

Frequency Range	26.5-40 GHz
VSWR	1.2 max
Attenuation	20 ± 1.5 dB
Input Avg Power	200 Watts
Peak Power	2 kWatts
Operating Temperature	-40°C~+85°C

**Mechanical**

Waveguide Size	WR28(R320)
Flange Type(Input&Output)	IEC: UBR320
Material	Aluminum
Internal Finish	Conductive oxidation
External Finish	High temp black painted

**Dimensions(mm)**





### Typical Test Data

