



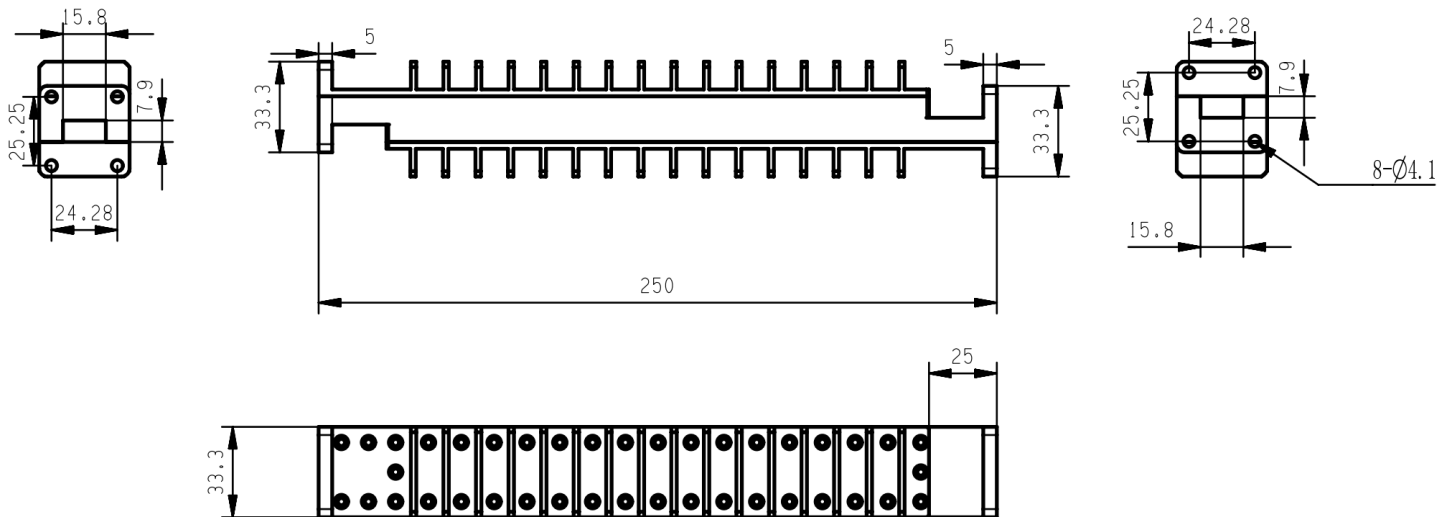
Electrical

Frequency Range	12-18 GHz
VSWR	1.12 max
Attenuation	40 ± 1.0 dB
Input Avg Power	100 Watts
Operating Temperature	-40°C~+85°C

Mechanical

Waveguide Size	WR62(R140)
Flange Type(Input&Output)	IEC: UBR140
Material	Aluminum
Internal Finish	Conductive oxidation
External Finish	High temp black painted

Dimensions(mm)





Typical Test Data

