

Waveguide Termination

WT112S

WR112, 6.57-9.99 GHz, 30 Watts, Square Cover Flange

Rev 1

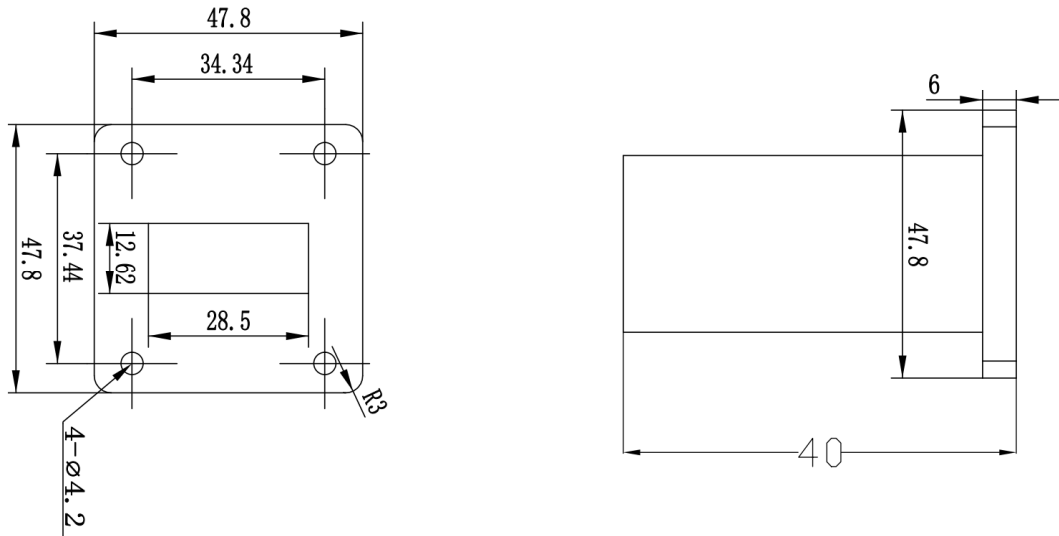
Electrical

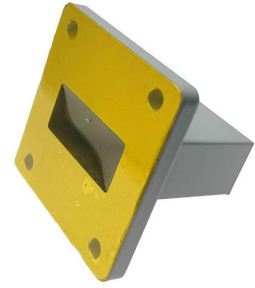
Frequency Range	6.57-9.99 GHz
VSWR	1.2 max
Input Avg Power	30 Watts @ 25°C
Operating Temperature	-40°C ~ +70°C

Mechanical

Waveguide Size	WR112(R84)
Flange Type	IEC: UBR84
Waveguide Material	Aluminum
Waveguide Finish	Grey painted

Dimensions(mm)





Waveguide Termination

WT112S

WR112, 6.57-9.99 GHz, 30 Watts, Square Cover Flange

Rev 1

Typical Test Data

