

Waveguide Termination

WT137A

WR137, 5.38-8.17 GHz, 6 Watts, Rectangular Cover Flange

Rev 1

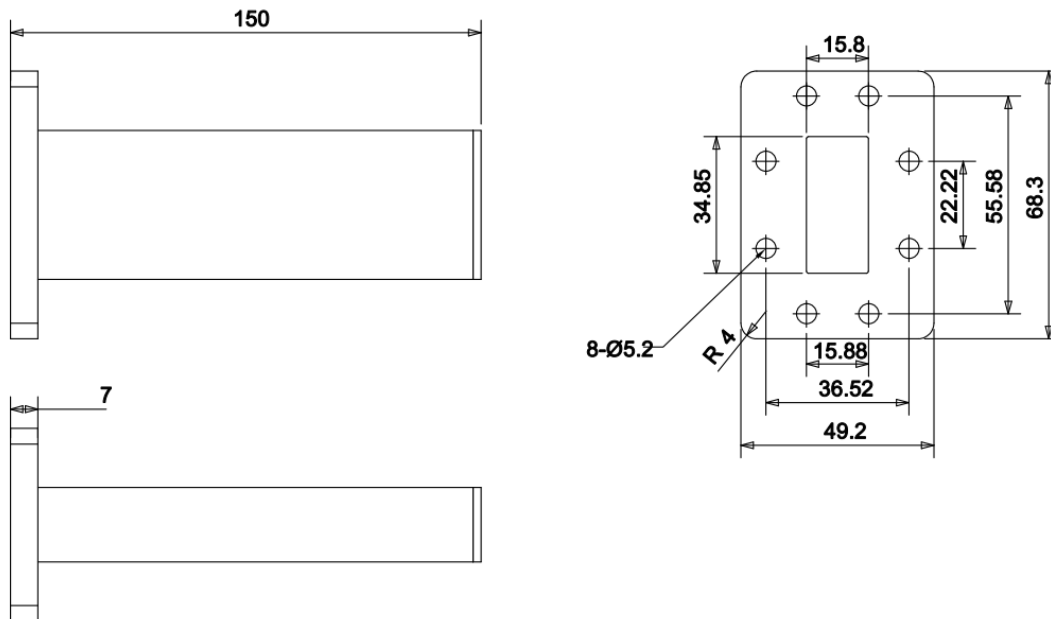
Electrical

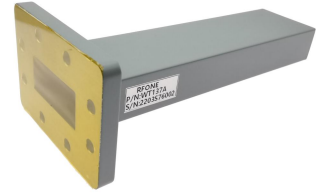
Frequency Range	5.38-8.17 GHz
VSWR	1.03 max
Input Avg Power	6 Watts @ 25°C
Operating Temperature	-40°C ~ +70°C

Mechanical

Waveguide Size	WR137(R70)
Flange Type	IEC: UDR70
Waveguide Material	Aluminum
Waveguide Finish	Grey painted

Dimensions(mm)





Waveguide Termination

WT137A

WR137, 5.38-8.17 GHz, 6 Watts, Rectangular Cover Flange

Rev 1

Typical Test Data

