



Waveguide Termination

WT137S

WR137, 5.38-8.17 GHz, 30 Watts, Rectangular Cover Flange

Rev 1

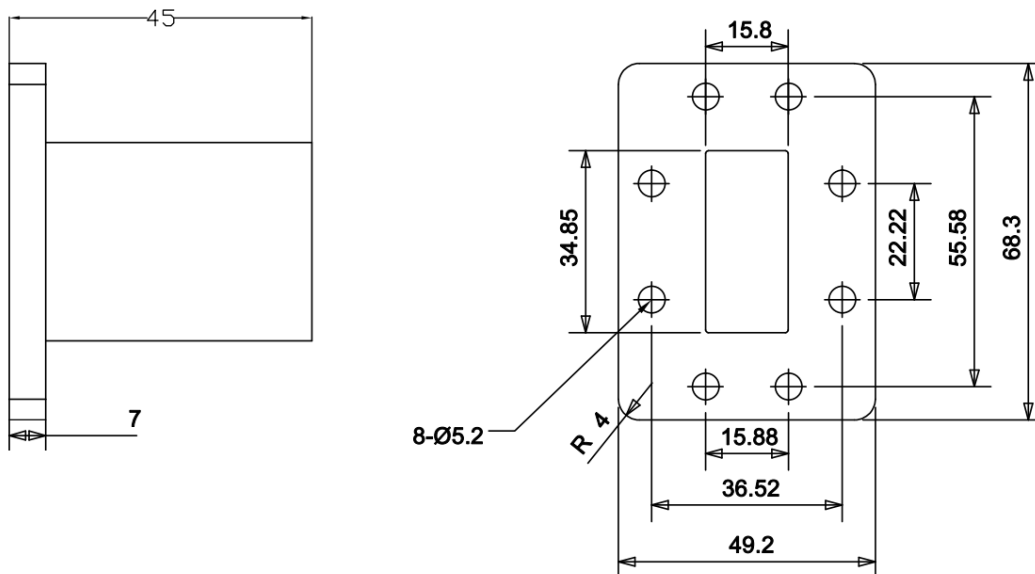
Electrical

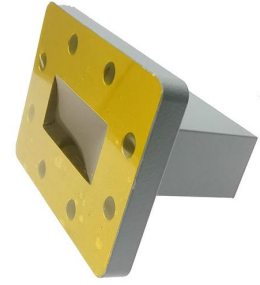
| | |
|-----------------------|-----------------|
| Frequency Range | 5.38-8.17 GHz |
| VSWR | 1.2 max |
| Input Avg Power | 30 Watts @ 25°C |
| Operating Temperature | -40°C ~ +70°C |

Mechanical

| | |
|--------------------|--------------|
| Waveguide Size | WR137(R70) |
| Flange Type | IEC: UDR70 |
| Waveguide Material | Aluminum |
| Waveguide Finish | Grey painted |

Dimensions(mm)





Typical Test Data

