



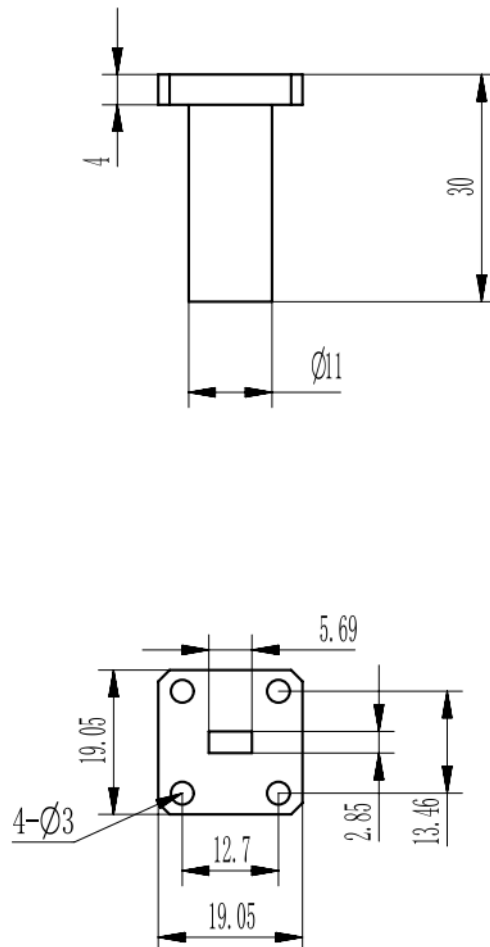
**Electrical**

Frequency Range	32.9-50.1 GHz
VSWR	1.2 max
Input Avg Power	2 Watts @ 25°C
Operating Temperature	-40°C ~ +70°C

**Mechanical**

Waveguide Size	WR22
Flange Type	UG599/U
Waveguide Material	Copper
Waveguide Finish	Gold plated

**Dimensions(mm)**





# Waveguide Termination

# WT22SS

WR22, 32.9-50.1 GHz, 2 Watts, UG599/U Cover Flange

Rev 1

## Typical Test Data

