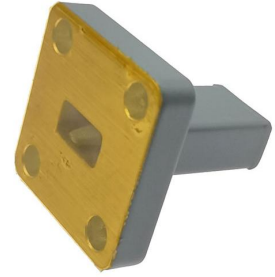


# Waveguide Termination

# WT28S



WR28, 26.3-40.0 GHz, 15 Watts, Square Cover Flange

Rev 2

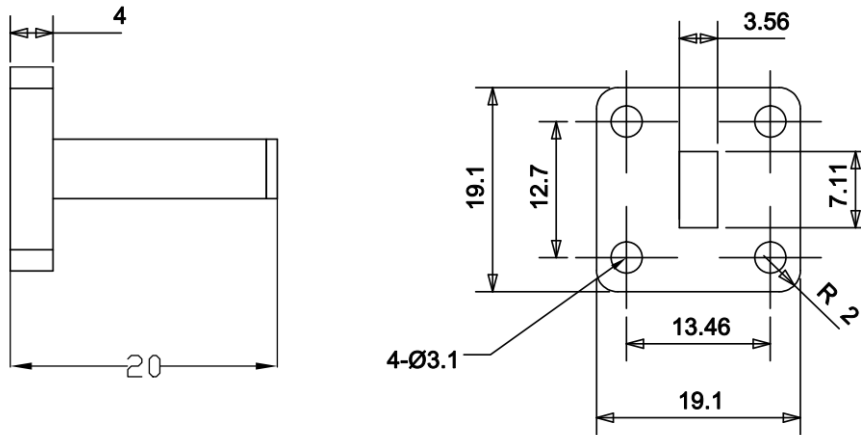
## Electrical

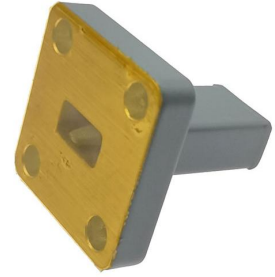
Frequency Range	26.3-40.0 GHz
VSWR	1.2 max
Input Avg Power	15 Watts @ 25°C
Operating Temperature	-40°C ~ +70°C

## Mechanical

Waveguide Size	WR28(R320)
Flange Type	IEC: UBR320
Waveguide Material	Copper
Waveguide Finish	Grey painted

## Dimensions(mm)





# Waveguide Termination

**WT28S**

**WR28, 26.3-40.0 GHz, 15 Watts, Square Cover Flange**

Rev 2

## Typical Test Data

