

## Waveguide Termination

**WT34S**

**WR34, 21.7-33.0 GHz, 15 Watts, UG1530/U Square Cover Flange**

Rev 1

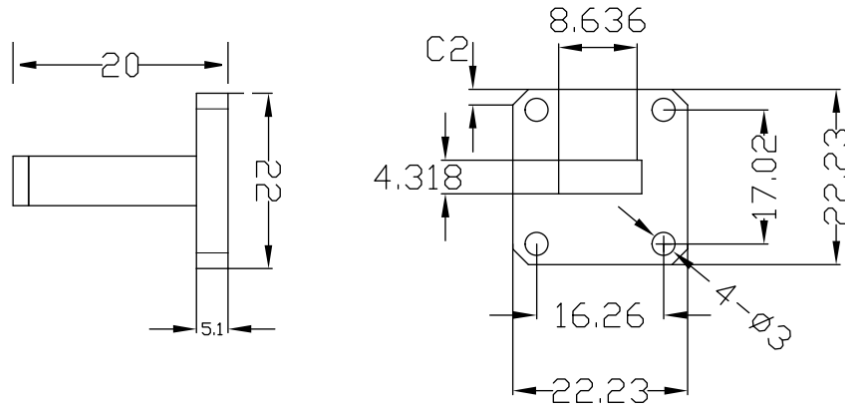
### Electrical

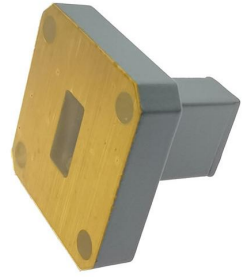
Frequency Range	21.7-33.0 GHz
VSWR	1.2 max
Input Avg Power	15 Watts @ 25°C
Operating Temperature	-40°C ~ +70°C

### Mechanical

Waveguide Size	WR34(R260)
Flange Type	UG1530/U
Waveguide Material	Aluminum
Waveguide Finish	Grey painted

### Dimensions(mm)





# Waveguide Termination

# WT34S

WR34, 21.7-33.0 GHz, 15 Watts, UG1530/U Square Cover Flange

Rev 1

## Typical Test Data

