

Waveguide Termination

WT34S

WR34, 21.7-33.0 GHz, 15 Watts, UBR260 Square Cover Flange

Rev 1

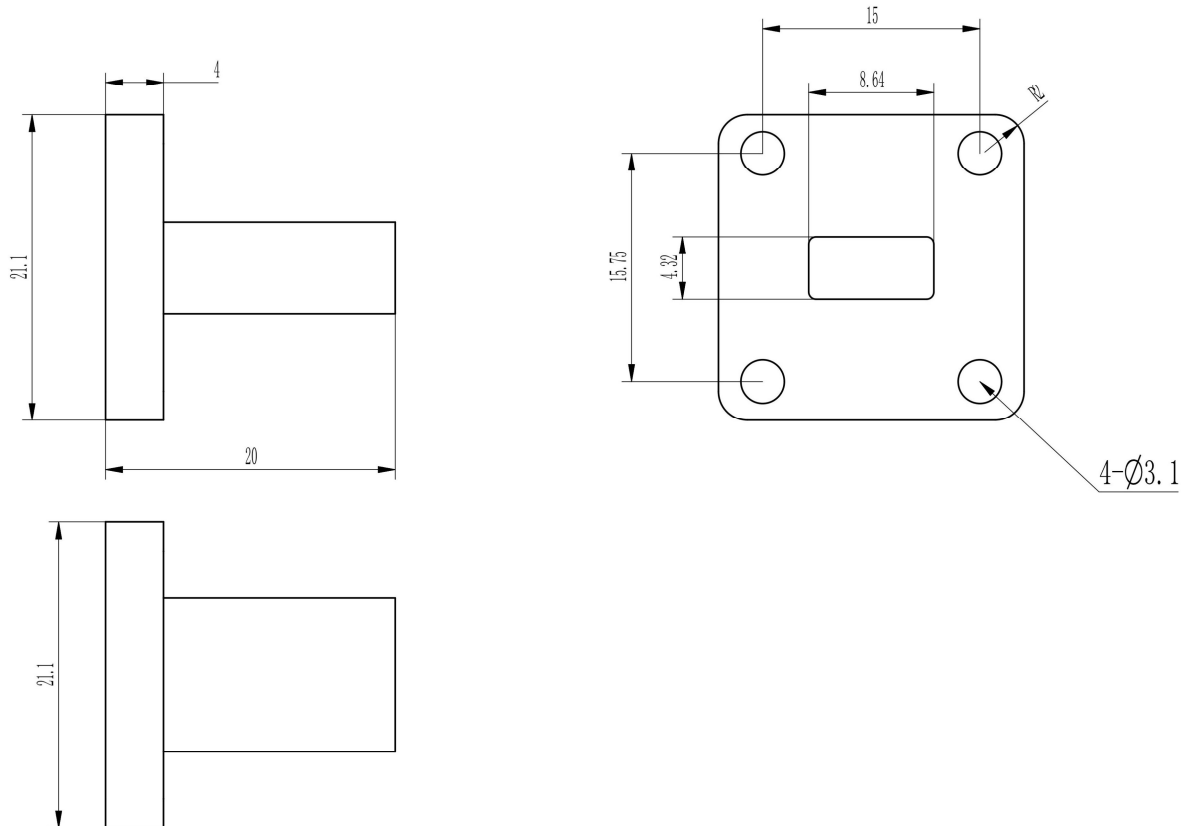
Electrical

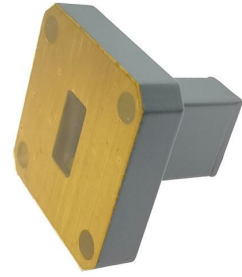
Frequency Range	21.7-33.0 GHz
VSWR	1.2 max
Input Avg Power	15 Watts @ 25°C
Operating Temperature	-40°C ~ +70°C

Mechanical

Waveguide Size	WR34(R260)
Flange Type	UBR260
Waveguide Material	Aluminum
Waveguide Finish	Grey painted

Dimensions(mm)





Waveguide Termination

WT34S

WR34, 21.7-33.0 GHz, 15 Watts, UBR260 Square Cover Flange

Rev 1

Typical Test Data

