

Waveguide Termination

WT51L



WR51, 14.5-22.0 GHz, 20 Watts, UBR180 Flange

Rev 1

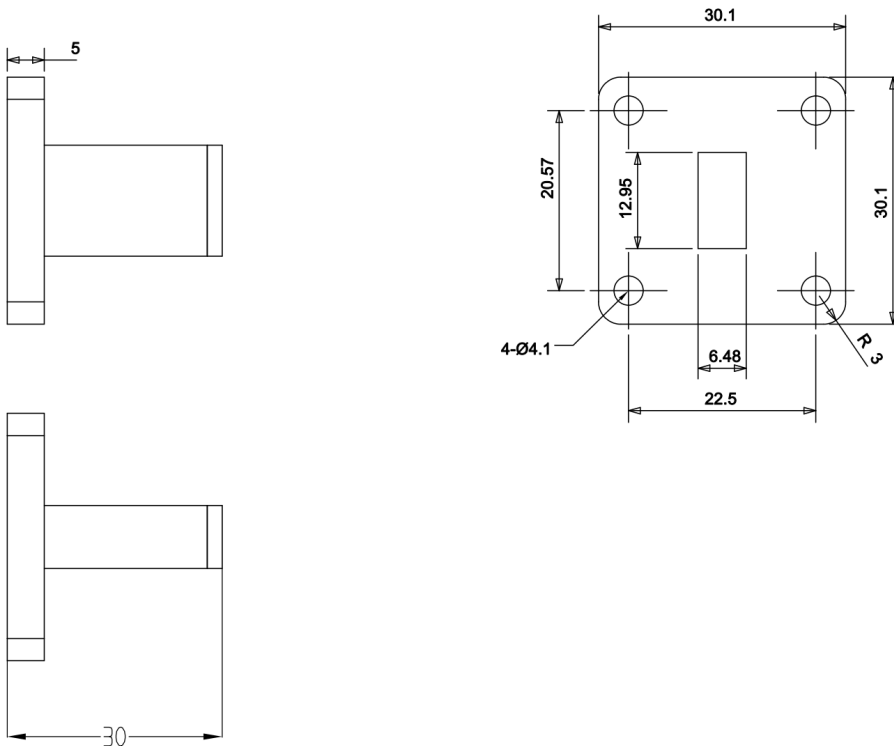
Electrical

Frequency Range	14.5-22.0 GHz
VSWR	1.2 max
Input Avg Power	20 Watts @ 25°C
Operating Temperature	-40°C ~ +70°C

Mechanical

Waveguide Size	WR51(R180)
Flange Type	UBR180
Waveguide Material	Aluminum
Waveguide Finish	Grey painted

Dimensions(mm)





Typical Test Data

