

# Waveguide Termination

WT75A



WR75, 9.84-15.0 GHz, 2 Watts, Square Cover Flange

Rev 1

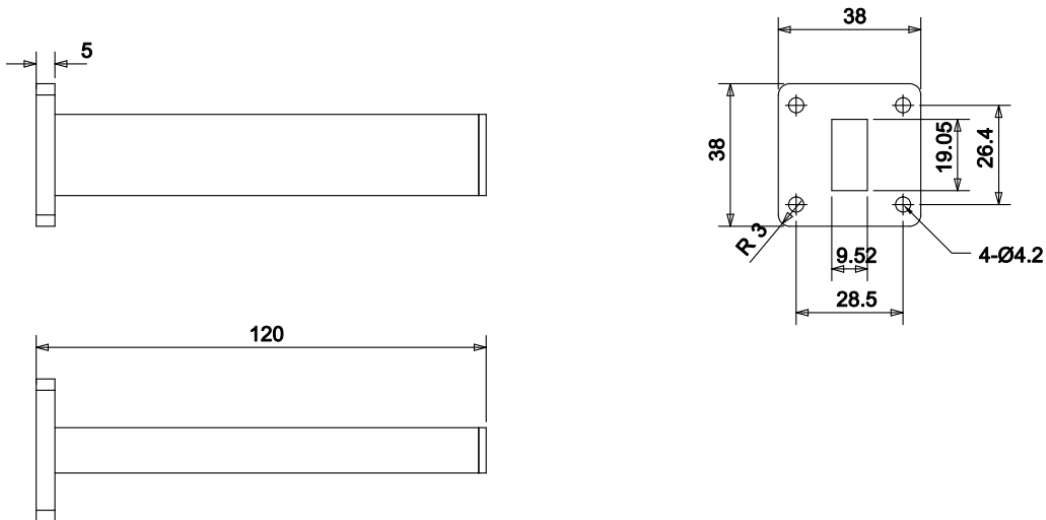
## Electrical

Frequency Range	9.84-15.0 GHz
VSWR	1.05 max
Input Avg Power	2 Watts @ 25°C
Operating Temperature	-40°C ~ +70°C

## Mechanical

Waveguide Size	WR75(R120)
Flange Type	IEC: UBR120
Waveguide Material	Aluminum
Waveguide Finish	Grey painted

## Dimensions(mm)





### Typical Test Data

