



## Waveguide Termination

**WT75S**

**WR75, 9.84-15.0 GHz, 20 Watts, Square Cover Flange**

Rev 1

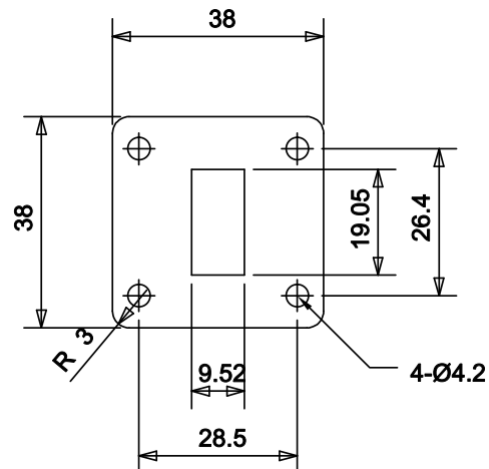
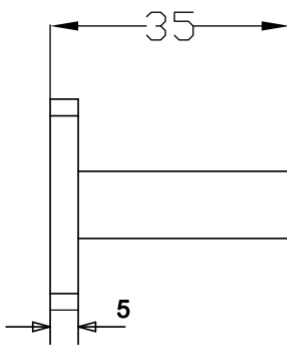
### Electrical

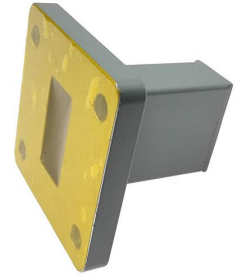
Frequency Range	9.84-15.0 GHz
VSWR	1.2 max
Input Avg Power	20 Watts @ 25°C
Operating Temperature	-40°C ~ +70°C

### Mechanical

Waveguide Size	WR75(R120)
Flange Type	IEC: UBR120
Waveguide Material	Aluminum
Waveguide Finish	Grey painted

### Dimensions(mm)





# Waveguide Termination

WT75S

WR75, 9.84-15.0 GHz, 20 Watts, Square Cover Flange

Rev 1

## Typical Test Data

